



# TerioStation

## **Install Manual**

Revision 1.2

**OKI Data Infotech Corporation**

Copyright© 2015 OKI Data Infotech Corporation.

All rights reserved.

The contents of this manual may be changed without prior notice.

TerioStation™ is a trademark of OKI Data Infotech Corporation, which are registered in some jurisdictions.

Windows is a registered trademark of Microsoft Corporation in the United States and other countries.

Other company names and product names listed are the registered trademarks or trademarks of their respective companies.

# Documentation Scope

---

This document describes operating requirements, installation/uninstallation procedure, instructions on TerioStation application, and optional PDF Print function.

# TerioStation is ...

---

TerioStation™ is integrated software for OKI Data Infotech printers, operating on Microsoft Windows® and allowing latest user interface functions.

TerioStation's main functions are

- Preview;
- Print;
- Scan and file; and
- Scan and copy

of the following data.

- Image data (TIFF/JPEG/PNG/BMP);
- Drawing data (HP-GL/HP-GL2/HP RTL); and
- PDF files

Optionally, TerioStation provides PDF Print function.

To use the PDF Print function, the LP-874 TerioStation PDF Print Option must be purchased separately.

TerioStation uses the libraries of the following manufacturers.

ABCpdf .NET 7.0

Copyright (C) 2009 WebSupergoo.

ImageKit7 ActiveX

Copyright (C) 2006 Newtone Corporation.

Harlequin Host Renderer

Copyright (C) 1989-2007 Global Graphics Software Ltd.

# Table of Contents

---

<b>Chapter 1</b>	<b>Operating requirements for TerioStation</b>	<b>6</b>
1.1	Operating requirements for software .....	6
1.2	Printers operating with TerioStation installed .....	7
<b>Chapter 2</b>	<b>Install and uninstall TerioStation</b>	<b>8</b>
2.1	Install TerioStation .....	8
2.2	Uninstall TerioStation .....	10
<b>Chapter 3</b>	<b>Activate optional PDF Print function and install TerioStation</b>	<b>11</b>
3.1	PDF Print function is ... ..	11
3.2	Activate optional PDF Print function.....	12
3.3	Install TerioStation .....	14
<b>Chapter 4</b>	<b>Start and operate TerioStation</b>	<b>21</b>
4.1	Start TerioStation .....	21
4.2	Operate TerioStation.....	21

# Chapter 1      Operating requirements for TerioStation

## 1.1      Operating requirements for software

Category	Requirements
OS	Windows XP 32-bit (Microsoft .NET Framework 3.5 or later) Windows Vista 32-bit/64-bit Windows 7 32-bit/64-bit Windows 8 32-bit/64-bit (Not compatible with Windows RT) Windows Server 2003 32-bit/64-bit(x64) Windows Server 2003/R2 32-bit/64-bit(x64) Windows Server 2008 32-bit/64-bit(x64) Windows Server 2008/R2 64-bit(x64)
CPU	Intel Pentium 4 3GHz or more/Xeon 3GHz or more AMD Athlon64 2GHz or more/Opteron 2GHz or more
Memory	1GB or more (Recommended: 2GB or more)
HDD	Free HDD space must be 40GB or more.
Video	1024×768 (Video card and display to display 16-bit color image.)
Ethernet port	TCP/IP protocol (1000BASE-T/100BASE-TX)
CD/DVD-ROM drive	Required for installation
Software	Adobe Reader 9 or later

### Precautions when installing Windows 8

- Microsoft .NET Framework 3.5 must be installed.  
(Although Windows 8 includes .NET Framework 4.5, the installation of TerioStation requires the installation of .NET Framework 3.5.)
- Adobe Reader Version 11, which is compatible with Windows 8, must be installed.

## 1.2 Printers operating with TerioStation installed

Printers and Firmware	Description
Printers	LP-2050, LP-2050MF, LP-1030, LP-1030MF, LP-1010*, LP-1010MF*, LP-1020*, LP-1020MF* * The optional PDF Print function is not available.
Required firmware	LP-2050/LP-2050MF: Version 3.56 or later (PDF Print option requires Version 5.12 or later.) LP-1030/LP-1030MF: Version 3.56 or later (PDF Print option requires Version 5.12 or later.) LP-1010/LP-1010MF: Version 06B or later LP-1020/LP-1020MF: Version 01D or later

## Chapter 2 Install and uninstall TerioStation

### 2.1 Install TerioStation

Install the TerioStation with the procedure below.

Note that the following procedure assumes that you connect your printer to the computer for the first time. If you are already using the printer with connecting to another OKI Data Infotech software, start the procedure from Step (4).

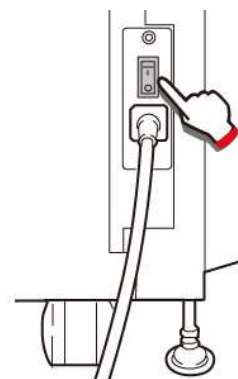


#### Note

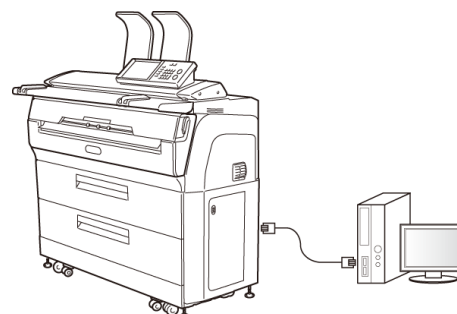
Close all programs before installing the software.

(1) Install the computer on which you will install the TerioStation.

(2) Switch on the power of the printer, and then set the printer to an online state.



Then connect the computer and your printer via Ethernet.





- (3) Set the IP address for your printer.  
For the IP address setup procedure, see the printer's operation manual.
- (4) If your printer operates with optional PDF Print function, activate the function on the printer.  
For the procedure, see **3.2 Activate optional PDF Print function**.

**Note**

If the LP-874 TerioStation PDF Print option has not been purchased, this setting is not required.

- (5) Install TerioStation.  
For details about the installation procedure, see **3.3 Install TerioStation**.

**Note**

For the LP1010/1020, SNMP is **Off** by default.  
If SNMP is **Off**, TerioStation cannot be installed. From the panel or the Web, set SNMP to **On**.

## 2.2 Uninstall TerioStation

Uninstall TerioStation, using:

- **Add or Remove Programs** on Windows XP/Server 2003; or
- **Programs and Features** on Windows Vista/7/8/Server 2008

(1) On the **Start** menu's **Control Panel**, select **Add or Remove Programs** or **Programs and Features**.

(2) Select three programs below to be deleted, and then follow the displayed instructions to remove them.

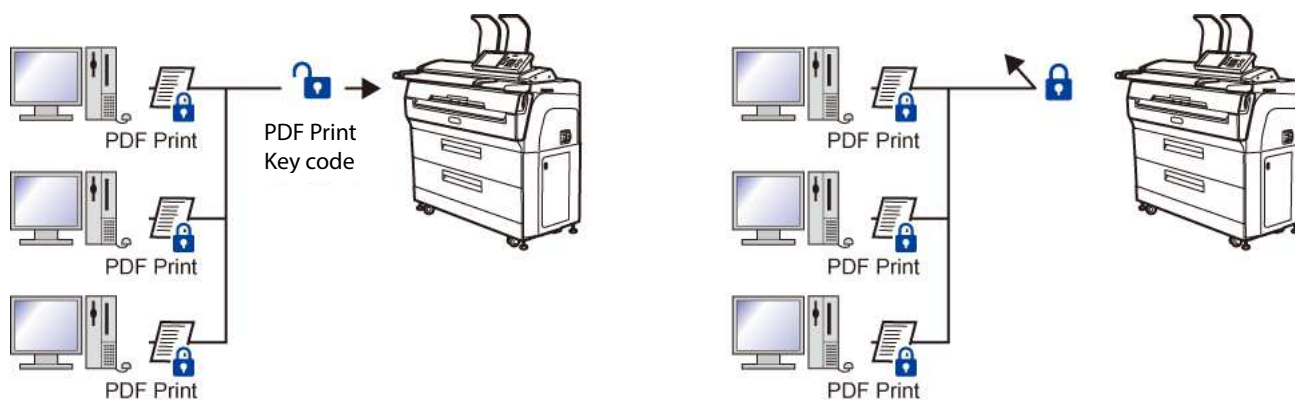
- TerioStation
- Teriostar2 ScanDriver (to be deleted when the scan driver has been installed)
- TerioStation PDF Print (to be deleted when the optional PDF Print function has been installed)

## Chapter 3      Activate optional PDF Print function and install TerioStation

### 3.1      PDF Print function is ...

The PDF Print function is an optional function to allow PDF data processed at high speed, employing Global Graphics Software's Harlequin Host Renderer.

The PDF Print function is activated by entering a license key to the printer.

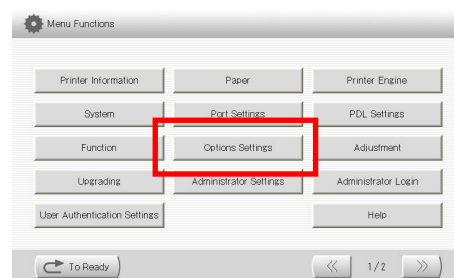


## 3.2 Activate optional PDF Print function

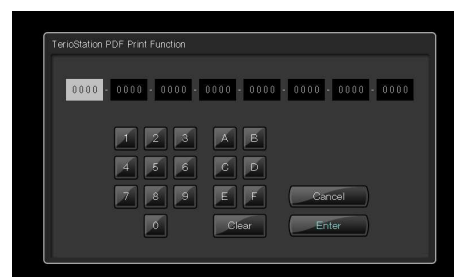
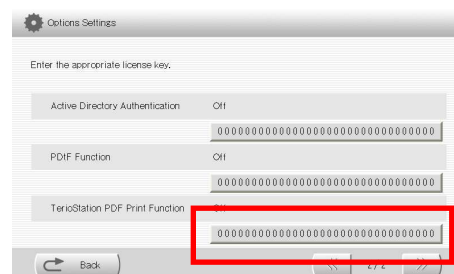
The following chart shows the printers that can be used with the PDF Print option.

Printers and Firmware	Description
Printers	LP-2050, LP-2050MF, LP-1030, LP-1030MF
Required firmware	LP-2050/LP-2050MF: Version 5.12 or later LP-1030/LP-1030MF: Version 5.12 or later

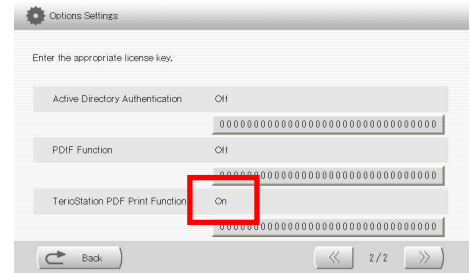
- (1) Check your license key to activate the optional TerioStation PDF Print you purchased.
- (2) On the printer's operation panel, select **Menu** -> **Options Settings**.



- (3) Select **TerioStation PDF Print Function**, and enter your license key.



- (4) Check that **TerioStation PDF Print Function's Off** has changed to **On**.



- (5) Set the printer in the standby status.  
Now the PDF Print function is activated.

### 3.3 Install TerioStation

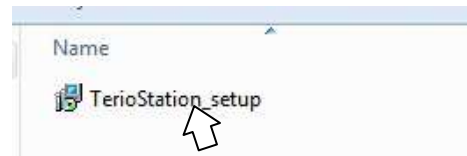
Check that the printer has been turned on.

- (1) Insert the included CD-ROM into the CD-ROM drive of the computer, and then run the program

**TerioStation\_setup.exe.**

If the program has been downloaded from the download site, find the program

**TerioStation\_setup.exe** in the compressed folder, and then run the program.

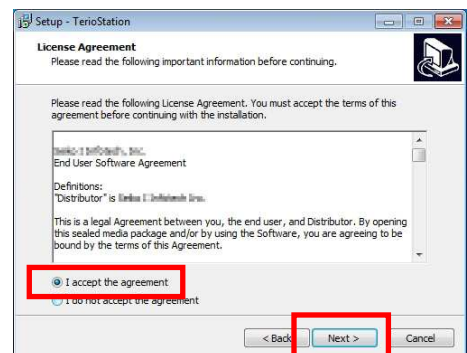


- (2) The TerioStation Setup Wizard start window appears. Click **Next**.

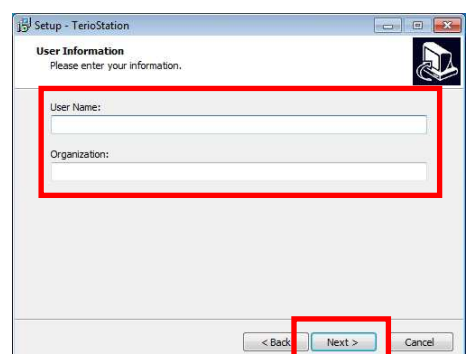


- (3) The license agreement window for this software appears.

To agree to the license agreement, select the **I accept the agreement** check box, and then click **Next**.



- (4) The user information window appears. Enter a name as desired, and then click **Next**.

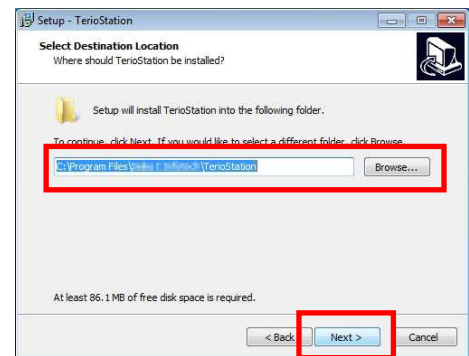


- (5) The installation destination location window appears.
- Specify the installation destination, and then click **Next**.

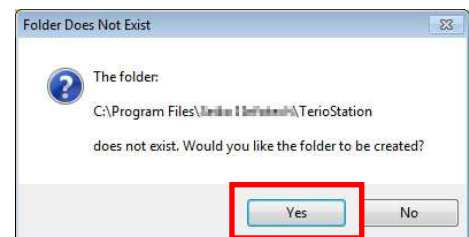


### Hint

To change the installation destination, click **Browser...**, and then select the destination location.



If the installation destination was not changed, a **Folder Does Not Exist** message appears. Click **Yes**.



- (6) Determine to or not to activate TerioStation's password security function.



### Hint

On installing TerioStation, password security function can be selected.

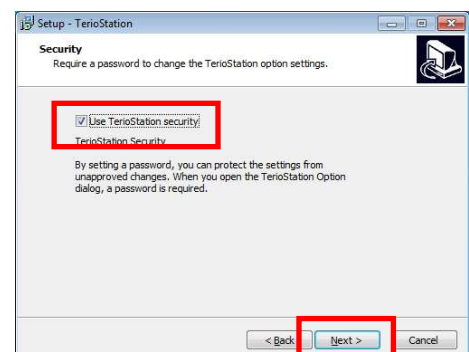
With the function, printer settings can be changed only by a printer administrator.

To deactivate the security function



To activate the security function, select the **Use TerioStation security** check box, and then click **Next**.

To activate the security function



When the **Use TerioStation security** check box is selected, a dialogue box to set a password appears.



### Note

Be careful not to forget the password.

If you lose your password, again install the TerioStation and set a new password.



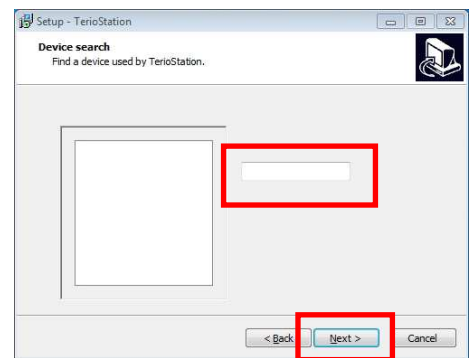
- (7) A window to set the IP address appears.  
Specify the IP address of the printer, and then click **Next**.



### Hint

On the **Printer list**, select your printer model.

If your printer is not displayed on the list, directly enter your printer's IP address in the **Host name/IP address** field.



### Note

For the LP1010/1020, SNMP is **Off** by default.

If SNMP is **Off**, TerioStation cannot be installed. From the panel or the Web, set SNMP to **On**.

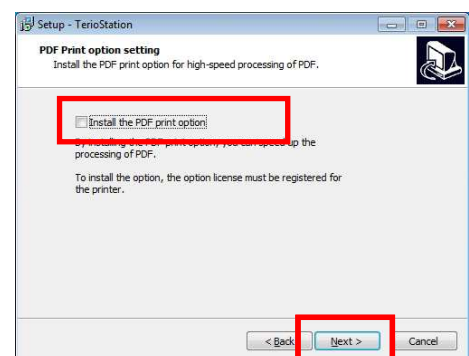
- (8) A window to configure the PDF Print option appears.  
Select whether to configure the PDF Print option, and then click **Next**.



### Hint

The box is already checked by default when the printer's **TerioStation PDF Print Function** has been activated.

To not install the PDF Print option





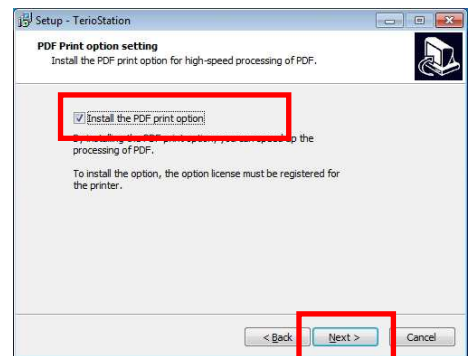


### Note

If you want to activate the PDF Print option after installing TerioStation without the PDF Print option, you must install TerioStation again.

**Example:** You want to activate the PDF Print function a few days after installing TerioStation without installing the PDF Print function.

### To install the PDF Print option

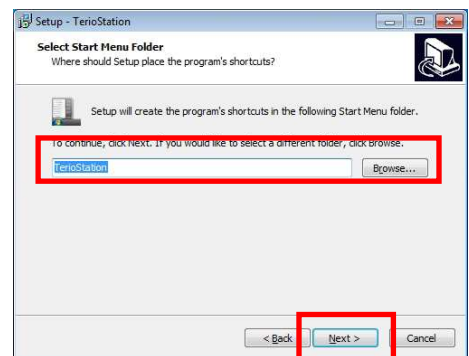


- (9) A window to configure the program group appears.  
Enter a name as desired, and then click **Next**.

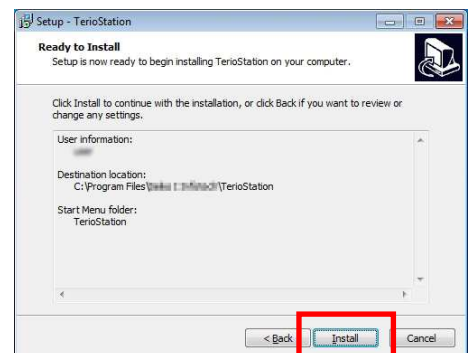


### Hint

To set a different directory, click **Browser...**, and then select the destination location.



- (10) The **Ready to Install** window appears.  
If **Install** is clicked, installation starts.  
Wait until installation is complete.



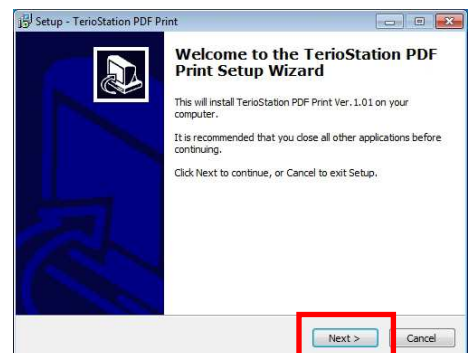
- (11) When installation is complete, the TerioStation PDF Print Setup Wizard start window appears.



### Note

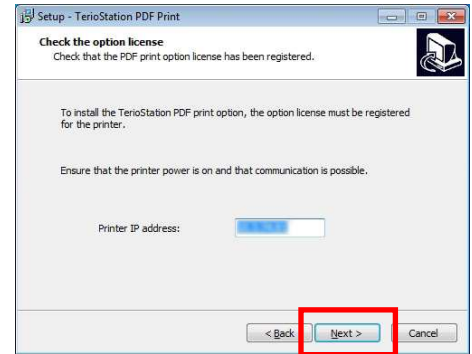
If the PDF Print option was not installed in Step 9, skip to the TerioStar2 ScanDriver Setup Wizard start window of Step 17.

Click **Next**.



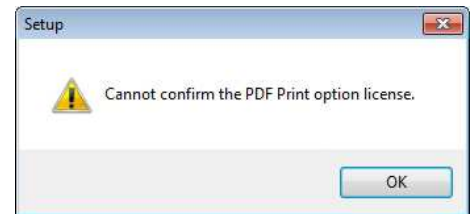
(12) A window to check the option license appears.

Click **Next**.



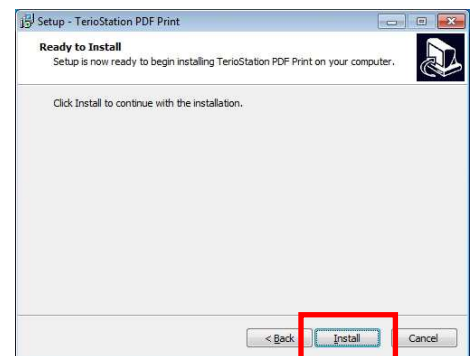
### Note

If the message shown to the right appears, a printer without an option key code was specified. Check the settings.  
(Firmware Version 5.12 or later is required.)



(13) The PDF **Print Ready** to Install window appears.

Click **Install**.

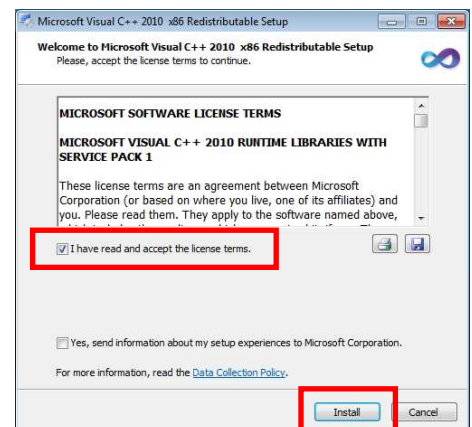


(14) The Microsoft software license agreement window appears.

To agree to the license agreement, select the **I have read and accept the license terms** check box, and then click **Install**.

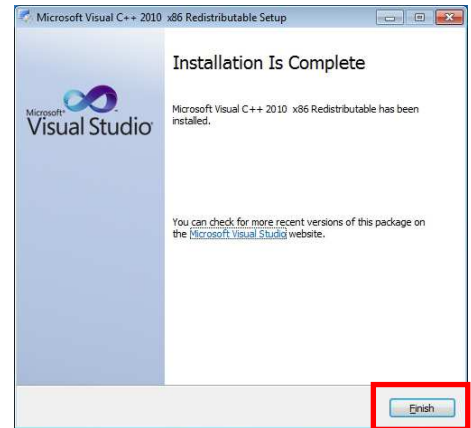
Installation starts.

Wait until installation is complete.



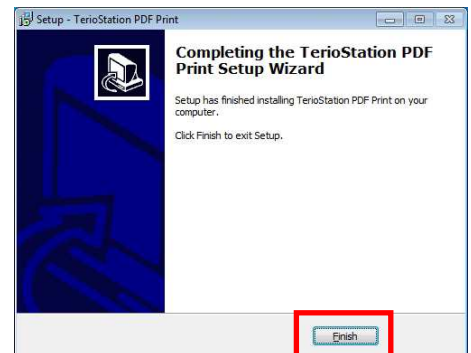
- (15) The Microsoft Visual C++ 2010 Runtime Component **Installation Is Complete** window appears.

Click **Finish**.



- (16) The PDF Print installation complete window appears.

Click **Finish**.



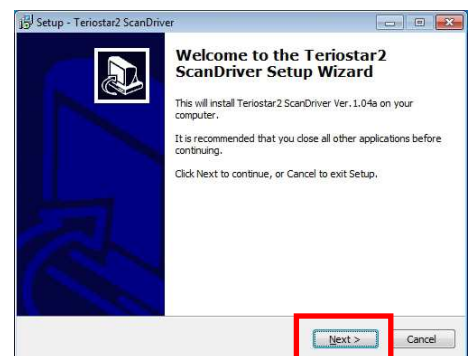
- (17) The TerioStar2 ScanDriver Setup Wizard start window appears.  
To continue, click **Next**.



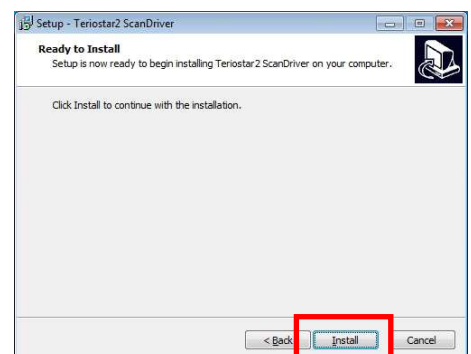
### Note

The TerioStar2 ScanDriver does not need to be installed for the printer model. Click **Cancel** to end setup, and then proceed to Step 20.

When scanning with the LP-1010 MF or LP-1020 MF, install either PlotShareOne PRO or PlotShareOne DX.

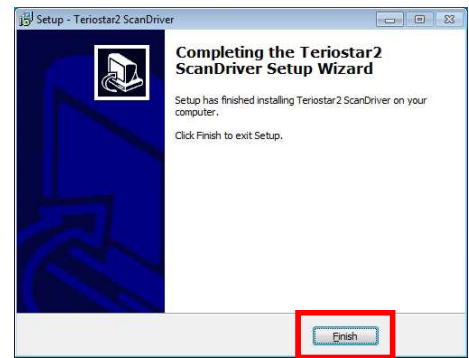


- (18) The ScanDriver **Ready to Install** window appears.  
If **Install** is clicked, installation starts.  
Wait until installation is complete.



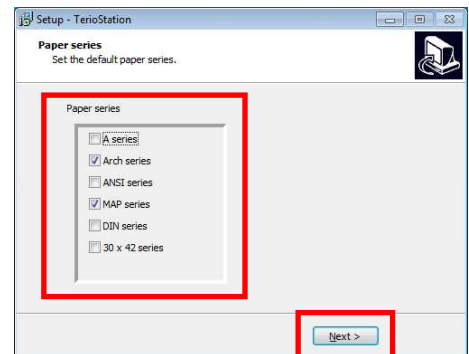
(19) The ScanDriver installation complete window appears.

Click **Finish**.



(20) A window to set the size standard appears.

Select the paper series to be used, and then click **Next**.



(21) The TerioStation installation complete window appears.

Click **Finish**.



This completes the installation of TerioStation.

## Chapter 4 Start and operate TerioStation

### 4.1 Start TerioStation

Start TerioStation with the procedure below:

- On the Start menu's TerioStation group, launch TerioStation; or
- Double-click the TerioStation shortcut icon on the desktop.



### 4.2 Operate TerioStation

From the **Start** menu, select **All Programs, TerioStation** folder, and **User's Manual**.



#### Note

The method to open the **Start** menu depends on the version of Windows.

